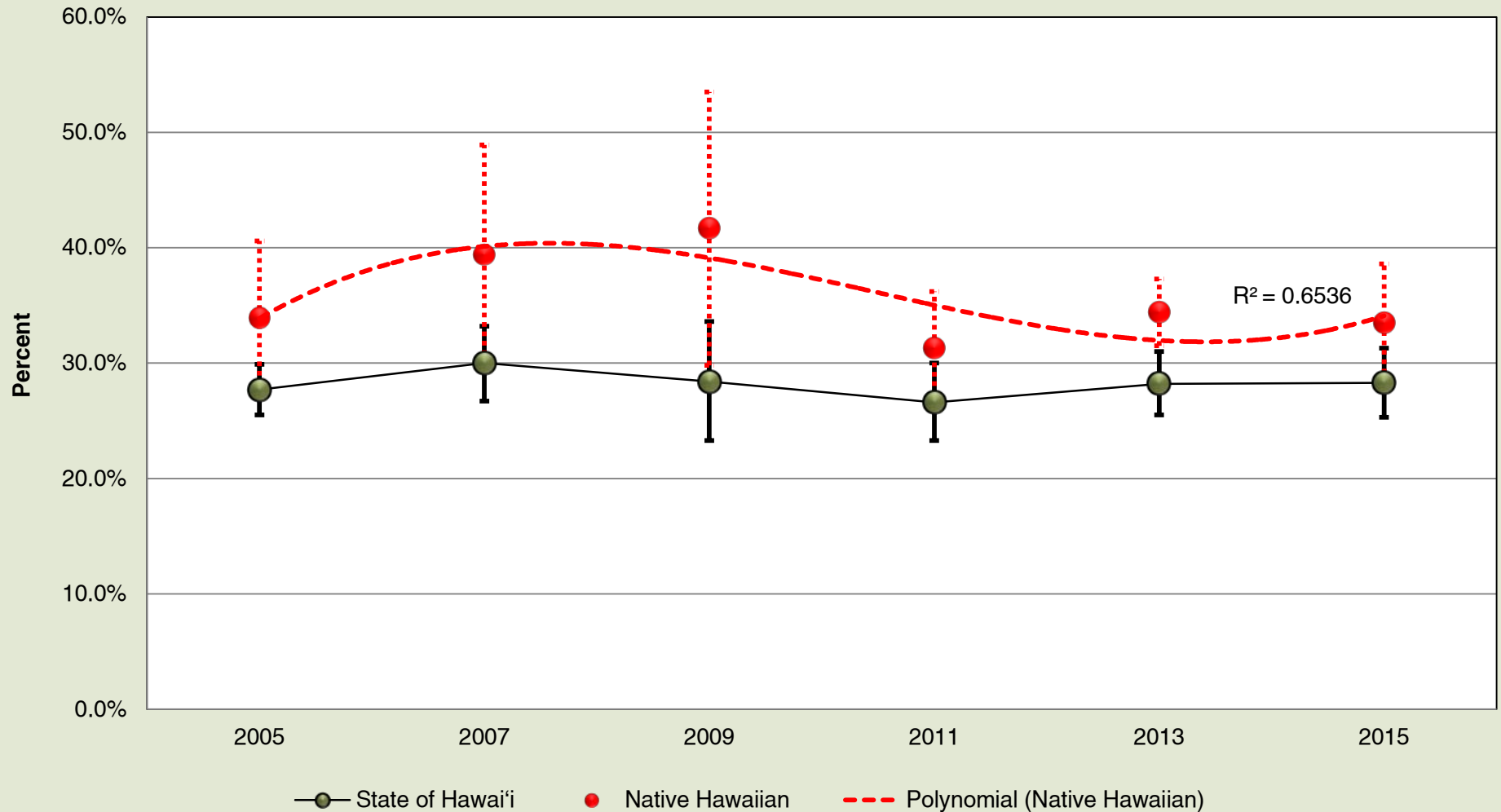


‘Ōpio 3A1: Native Hawaiian Public High School Students - Overweight or Obese (≥ 85 percentile BMI for age and sex) in Hawai‘i: 2005, 2007, 2009, 2011, 2013, 2015



Source: Hawai‘i State, Department of Health, Hawai‘i Health Data Warehouse, Youth Risk Behavioral Survey, Overweight & Obesity by School Type