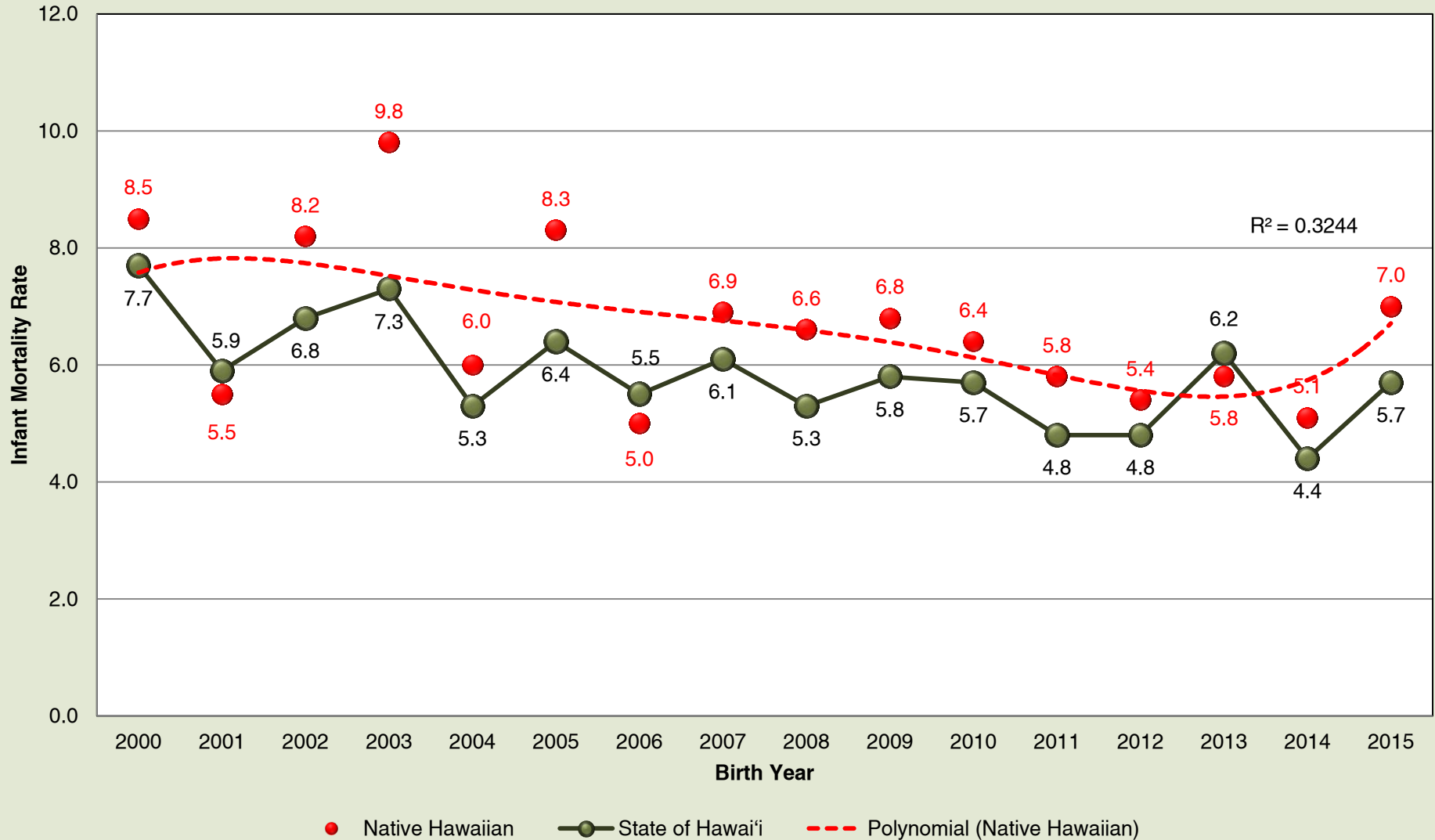


Hānau 1D1: Resident Native Hawaiian Infant Mortality Rate (aged <365 days) in Hawai'i: 2000-2013



Source: Hawai'i State, Department of Health, Office of Health Status Monitoring, Hawai'i Health Data Warehouse, Infant Deaths for the State of Hawaii (Residents only), Infant Deaths for the State of Hawaii (Residents only), by Infant's DOH Race-Ethnicity