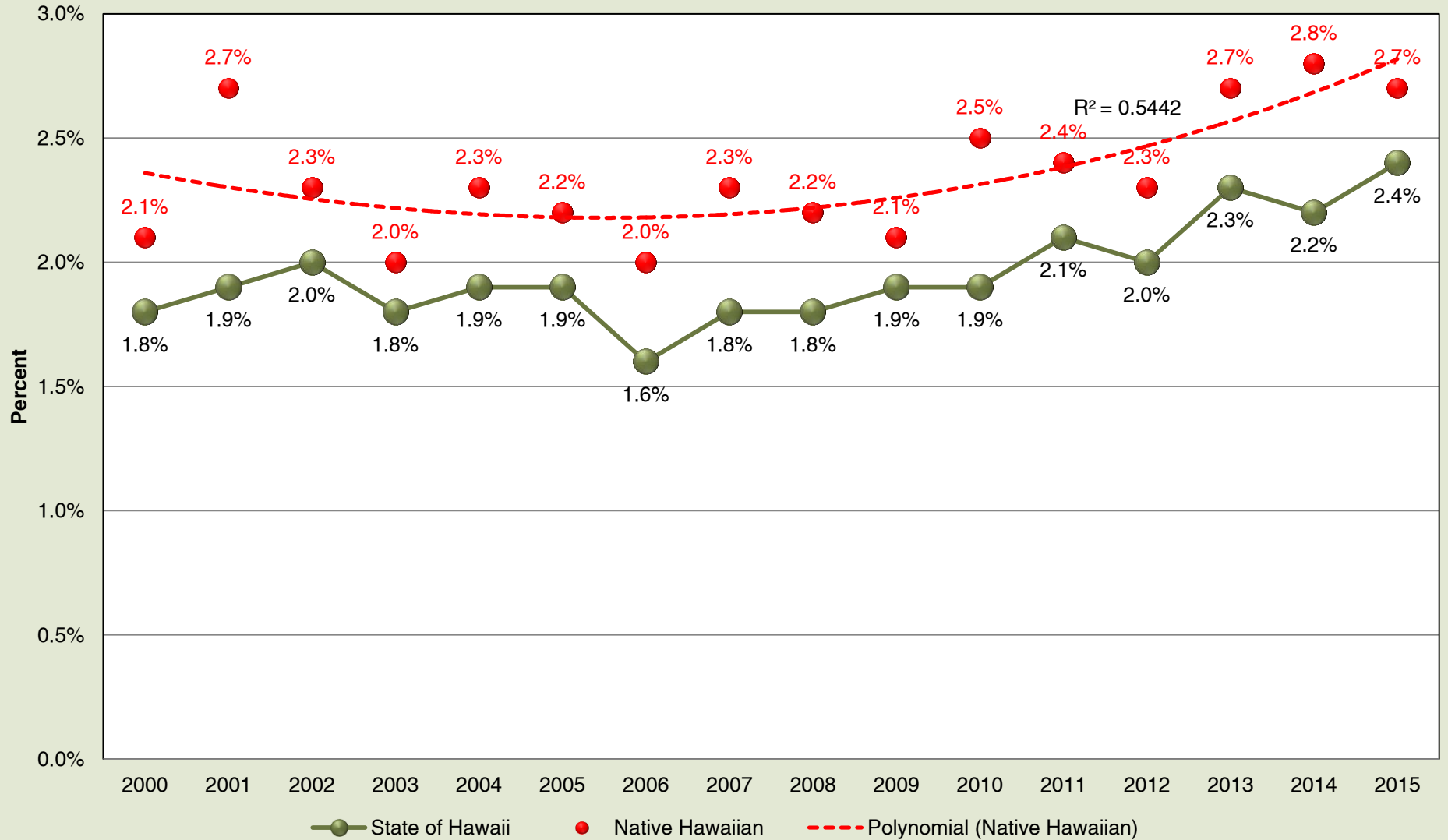


Hanau 1B7: Resident Native Hawaiian Mothers with Infants were Born Very Early Preterm (under 32 weeks gestation) in Hawai'i: 2000-2015



Source: Hawai'i State, Department of Health, Office of Health Status Monitoring, Hawai'i Health Data Warehouse, Very Early Preterm Births in Hawaii