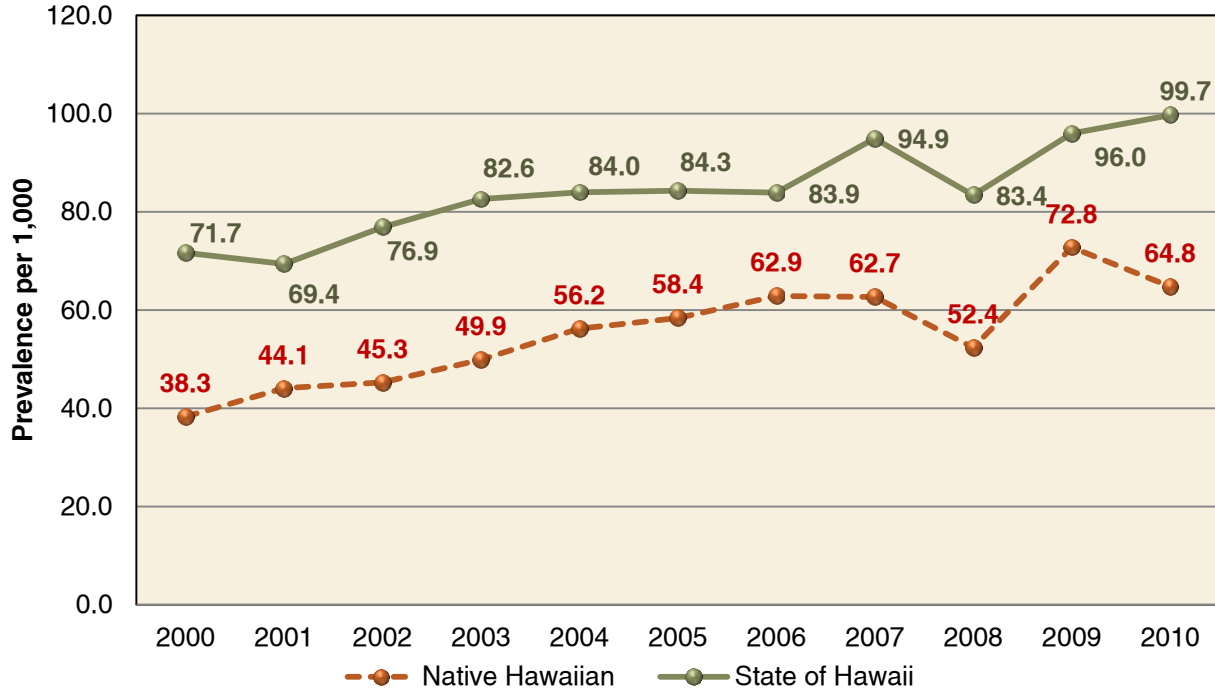
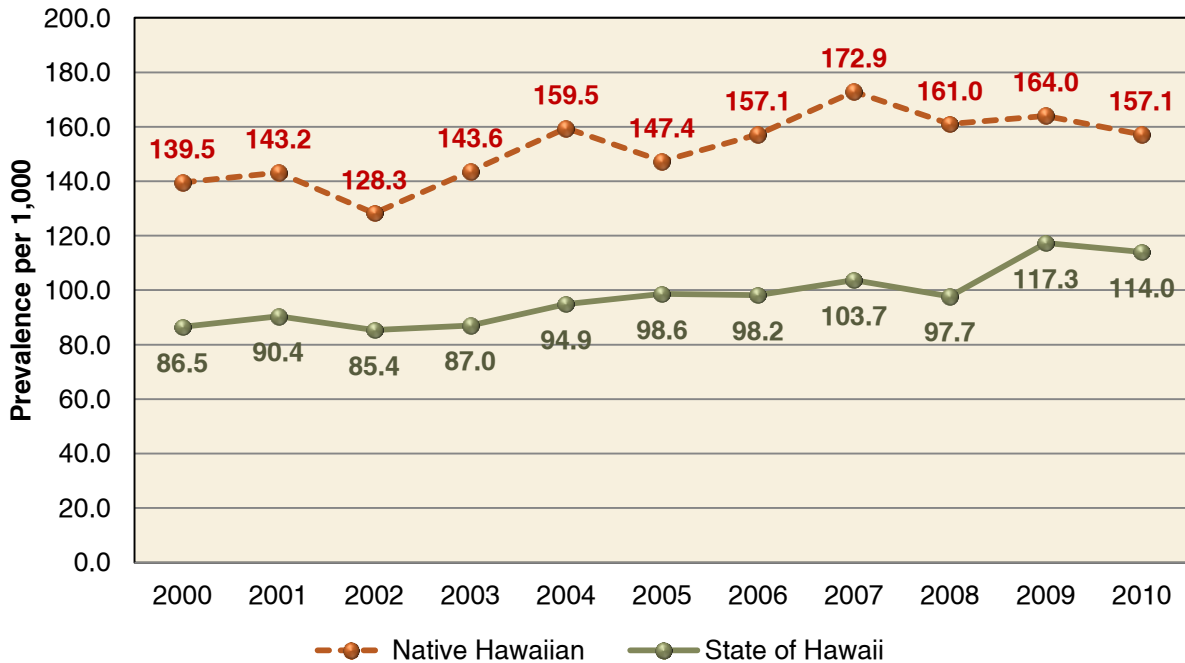


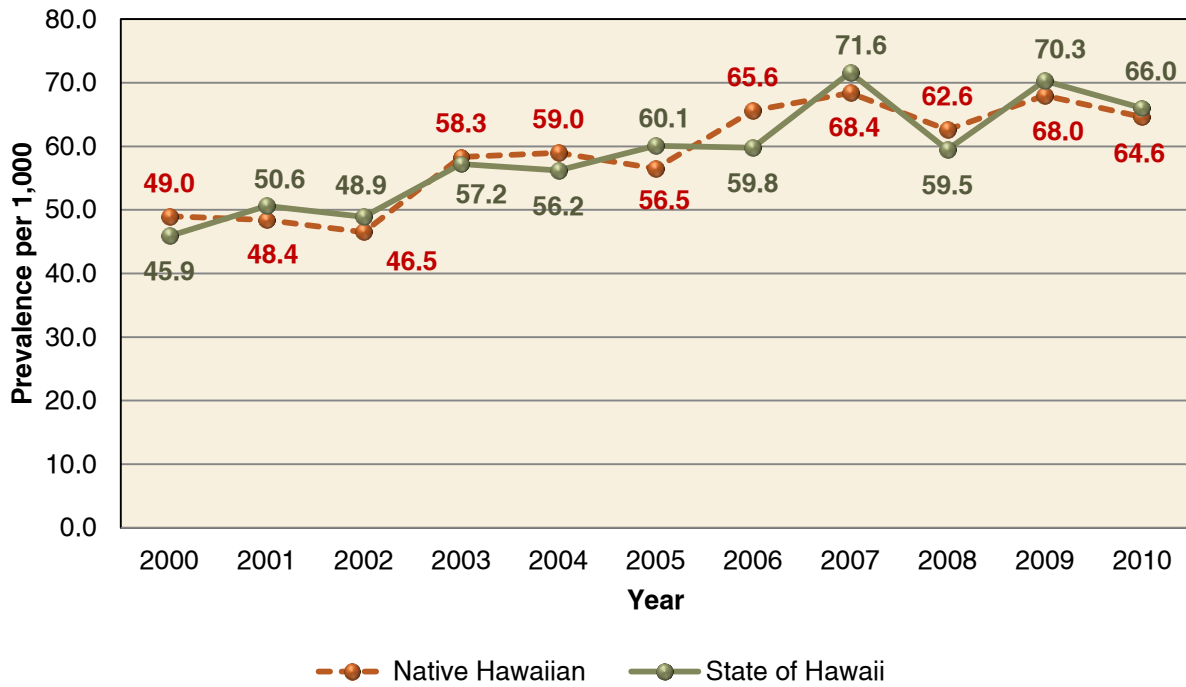
**Figure 7.55a Prevalence of Arthritis (not age adjusted) in Hawai'i: 2000-2010**



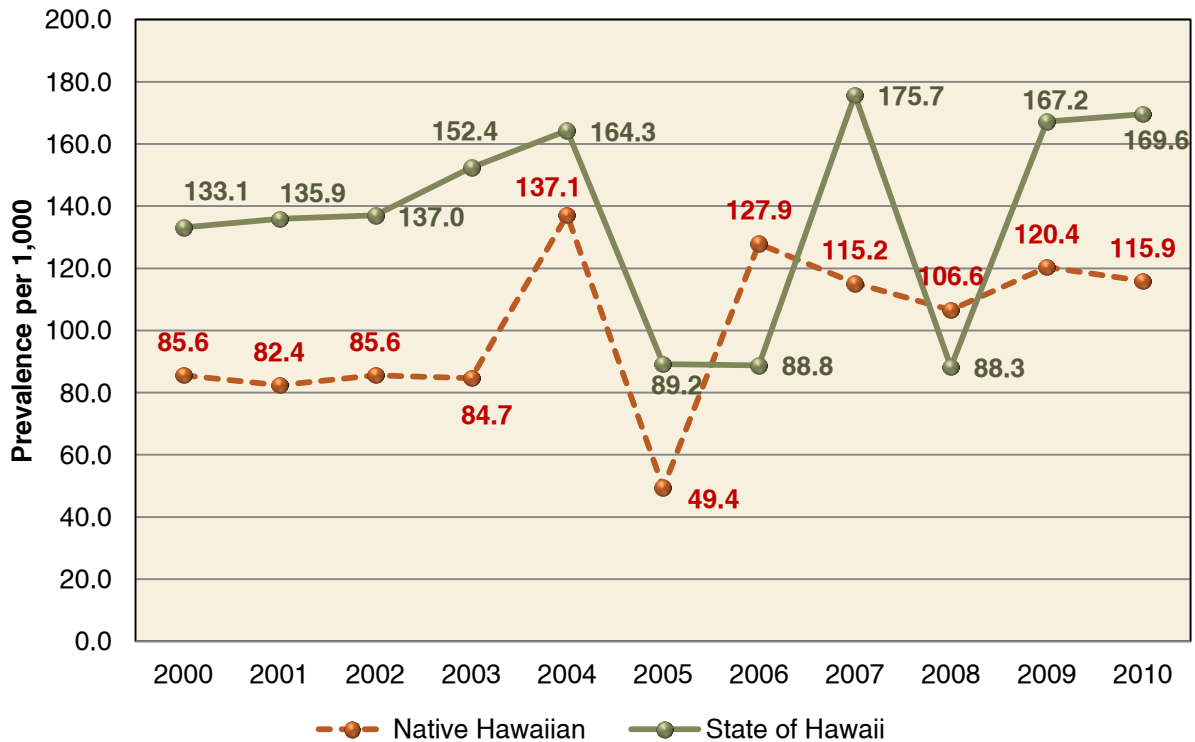
**Figure 7.55b Prevalence of Asthma (not age adjusted) in Hawai'i: 2000-2010**



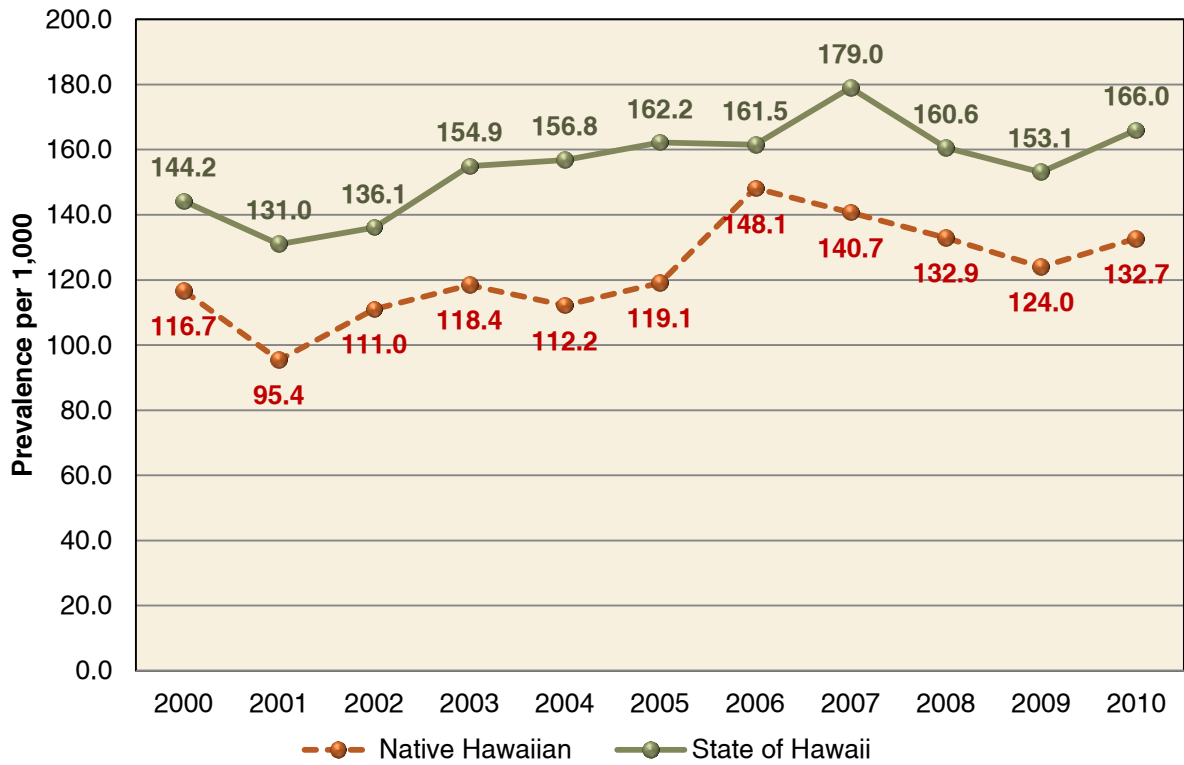
**Figure 7.55c Prevalence of Diabetes (not age adjusted) in Hawai'i: 2000-2010**



**Figure 7.55d Prevalence of High Blood Cholesterol (not age adjusted) in Hawai'i: 2000-2010**



**Figure 7.55e Prevalence of Hypertension (not age adjusted) in Hawai'i: 2000-2010**



**Source:** Hawai'i State, Department of Health, Hawai'i Health Survey.